

Grand Union to Close

By KEITH L. MARTIN

After a little more than six months in operation, the Grand Union supermarket market on Depot St. will be checking out permanently later this month.

According to an official from GU Family Markets, which owns the chain of stores, the Duxbury location is set to close its doors on November 29.

The store's general manager, Ted Miller, offered no comment when asked Tuesday about the store's immediate future and referred all questions to the parent company's Clifton Park, NY headquarters.



The Grand Union supermarket is set to close November 29.

Calls to Carl Wistreich, senior vice president and deputy general counsel for GU Markets and their parent company, C&S Wholesale Grocers, were not returned by press time.

continued on page 2

Duxbury Clipper

Wednesday, November 5, 2003

It's Checkout Time at Grand Union

continued from page one

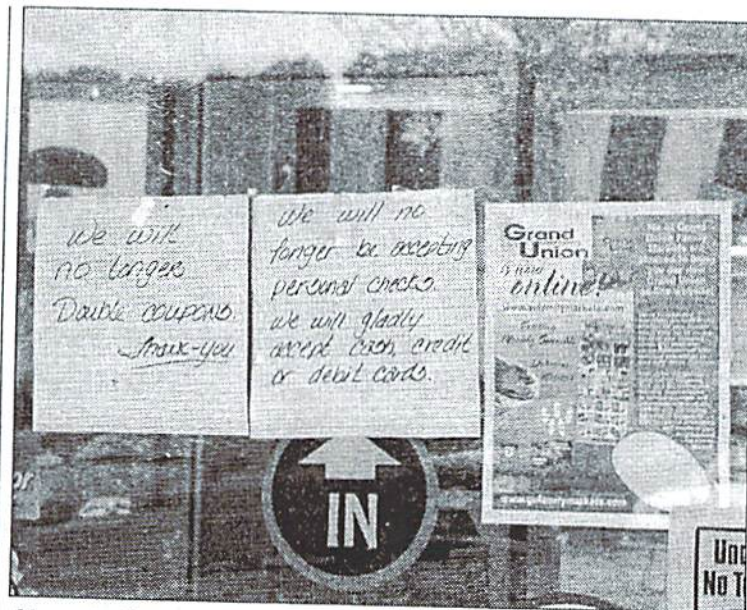
Patrick Breen, director of store operations for the company, also offered no comment and referred all inquiries to Wistreich.

A call to Registered Sanitarian for GU Markets, Tom D'Ettore, did however reveal the exact date the store is set to close.

"As far as I know, the store is closing on the 29th of the month," he said. "I know nothing more than we are closing and selling out product."

D'Ettore, who is responsible for food safety and board of health issues for the company, acknowledged that there is no set closing protocol for the stores. He said that once closed, his role will be to ensure the trash compactor is removed unless a buyer is found in the meantime.

Duxbury's Building Inspector Richard MacDonald said he has heard nothing more than the closing date for



Signs on the doors indicating no more double coupons and no personal checks are signs of the end at Grand Union.

the store, but once closed, his office will look at the store's physical appearance.

"We'll want to make sure that everything is okay with the building and that health-wise, all the perishable food has been removed," he said.

MacDonald added that given the Zoning Board of Appeals' recent decision on

signage for the store (see related story), he assumes the signs will not be even be put up.

In fact, the only new signage at Grand Union are the ones on the doors that indicate the store will no longer double coupons or accept personal checks. Inside, most items are marked 30 percent off and come Wednesday, everything in the store will be 50 percent off as the store tries to sell merchandise off its shelves.

In April, the former A&I Supermarket was one of eight stores in Massachusetts and Connecticut to be sold to GU Family Markets. Soon after the store began operating with the same personnel but under the new "Grand Union" name